

# Theory of inclusion and localization

By: Anwar Sadat-HelpAge International

# Why we talk about it?

- Sendai Framework for Action
- Humanitarian Summit.
- United Nations Convention for the Rights of Person with Disabilities- UNCRPD
- Madrid International plan of action
- Ageing in twenty first century-A celebration and a challenge

# Lets think about it- The view of different people



# Inclusion versus exclusion

Systematic exclusion (Group TORs)

Bringing IN is not always inclusion

Voluntary exclusion



## Let us define inclusion

- Inclusion is a process through which people at risk (mostly women, older people, Person with Disabilities, children and other excluded groups) can meaningfully participate in project activities and contribute in the decision making process and their voices are heard.

# Barriers to inclusion



- **Physical Barriers: Access**

Examples include access to infrastructure, access to your training venue, access to safe locations and access to shelter and WASH facilities



# Barriers to inclusion

- Attitudinal barriers:

Examples include stigma towards certain groups like older people, Person with disabilities and women



# Barriers to inclusion

- Institutional barriers:  
Examples include visions, missions and policies etc.

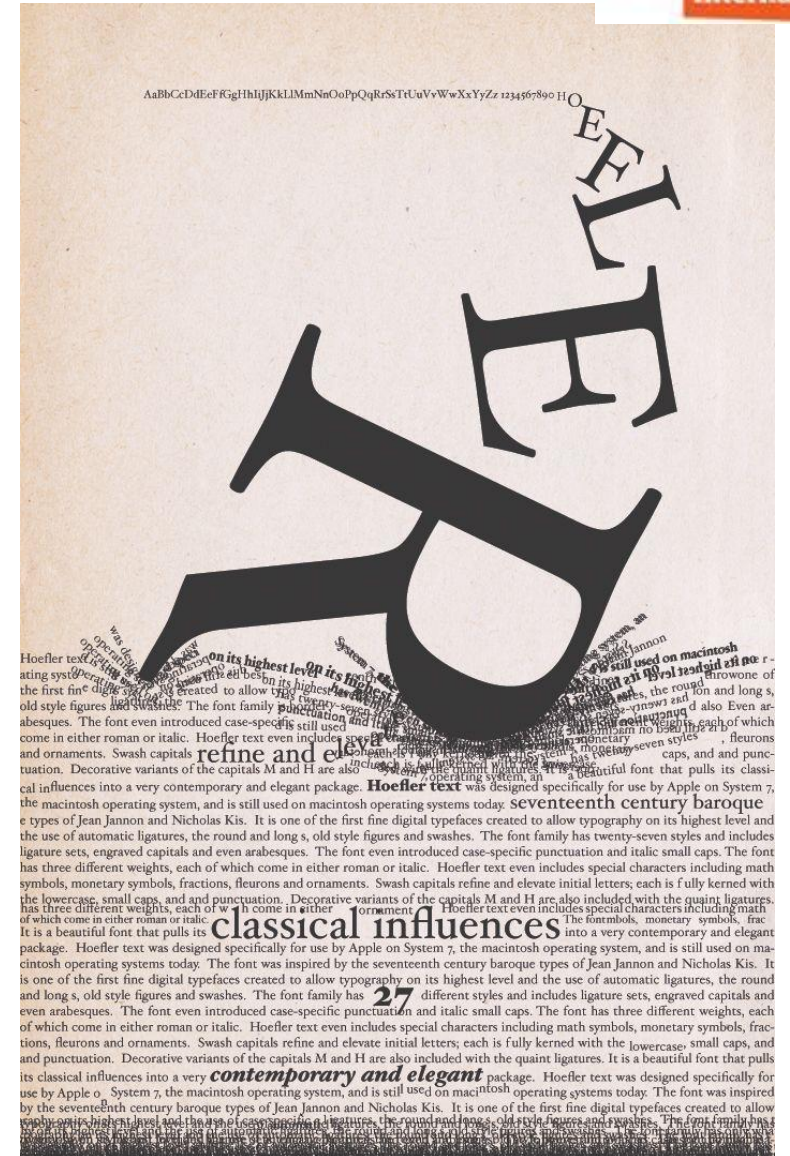




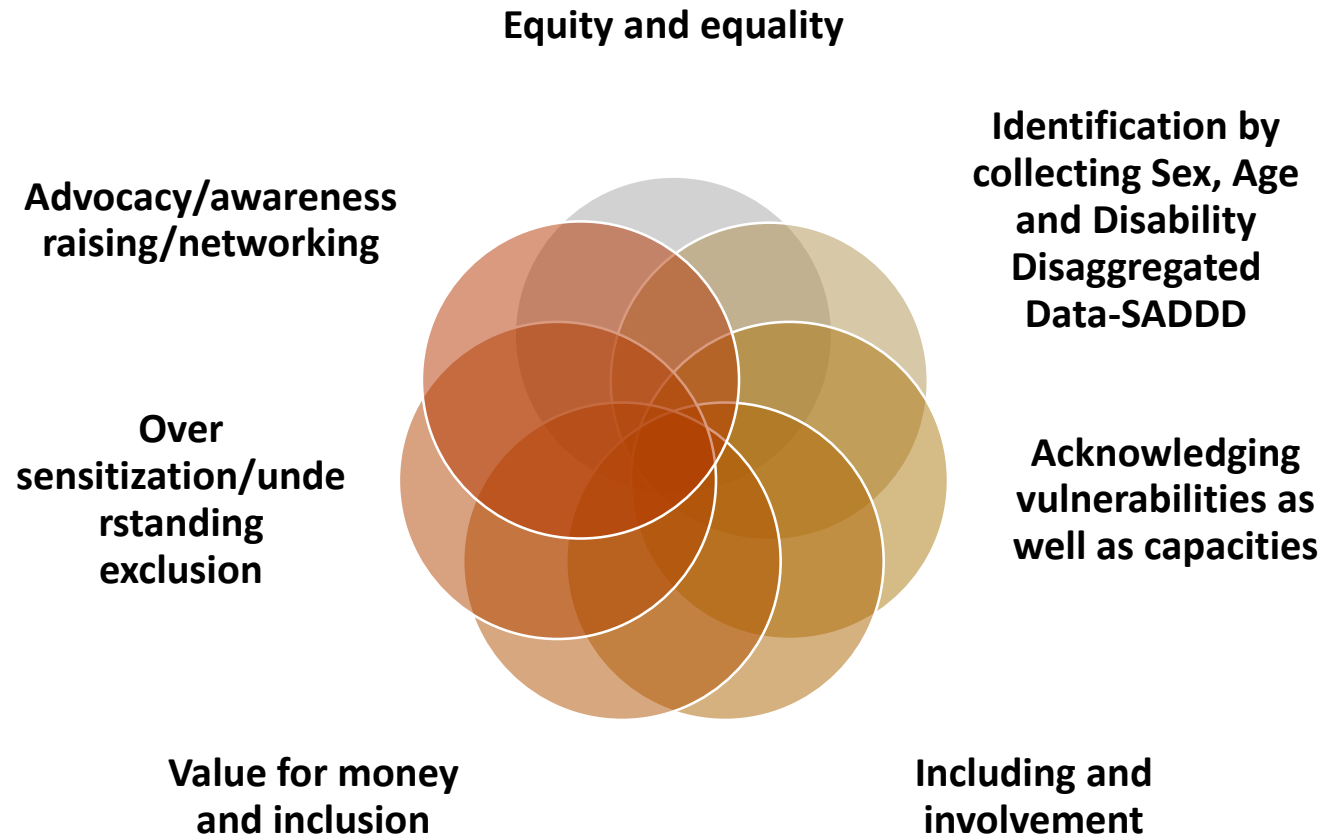
# Barriers to inclusion

- Communication barriers:

Examples include lack of expertise to communicate with older people and person with disabilities, understanding cultural norms, access to early warning systems and Information, Education and Communication-IEC material



# Theory of Inclusion-Key themes

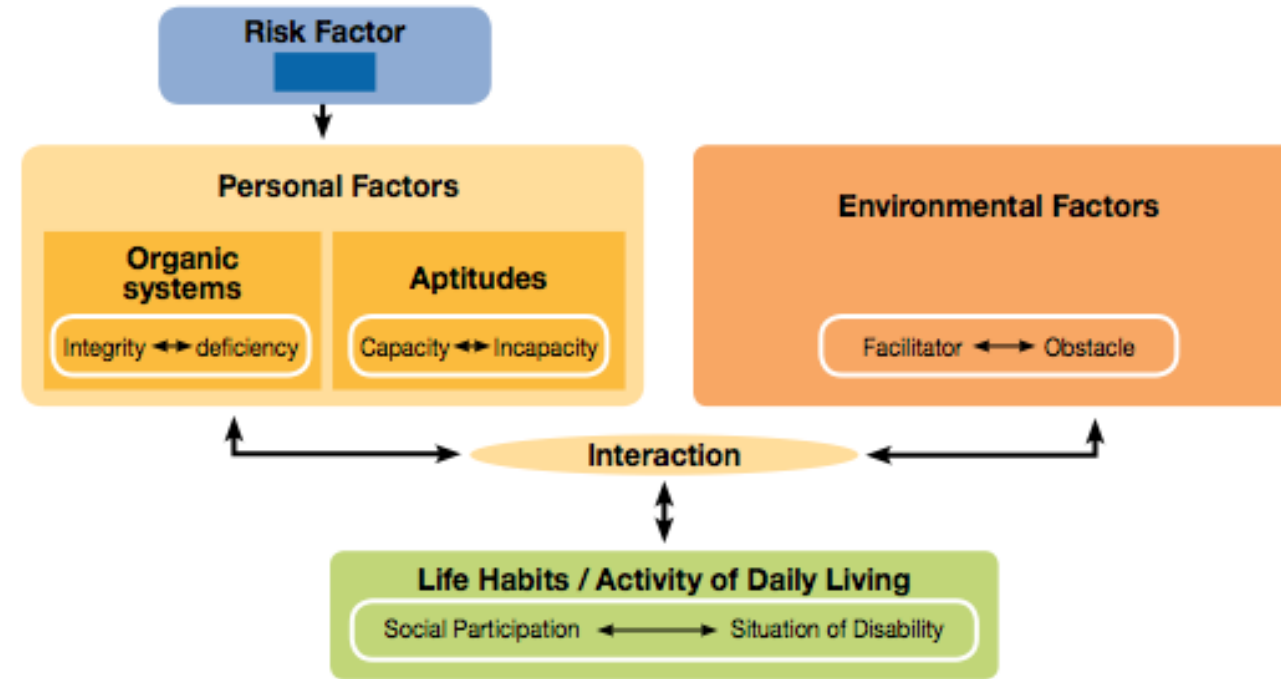


# Theory of Inclusion-Key ingredients to inclusion



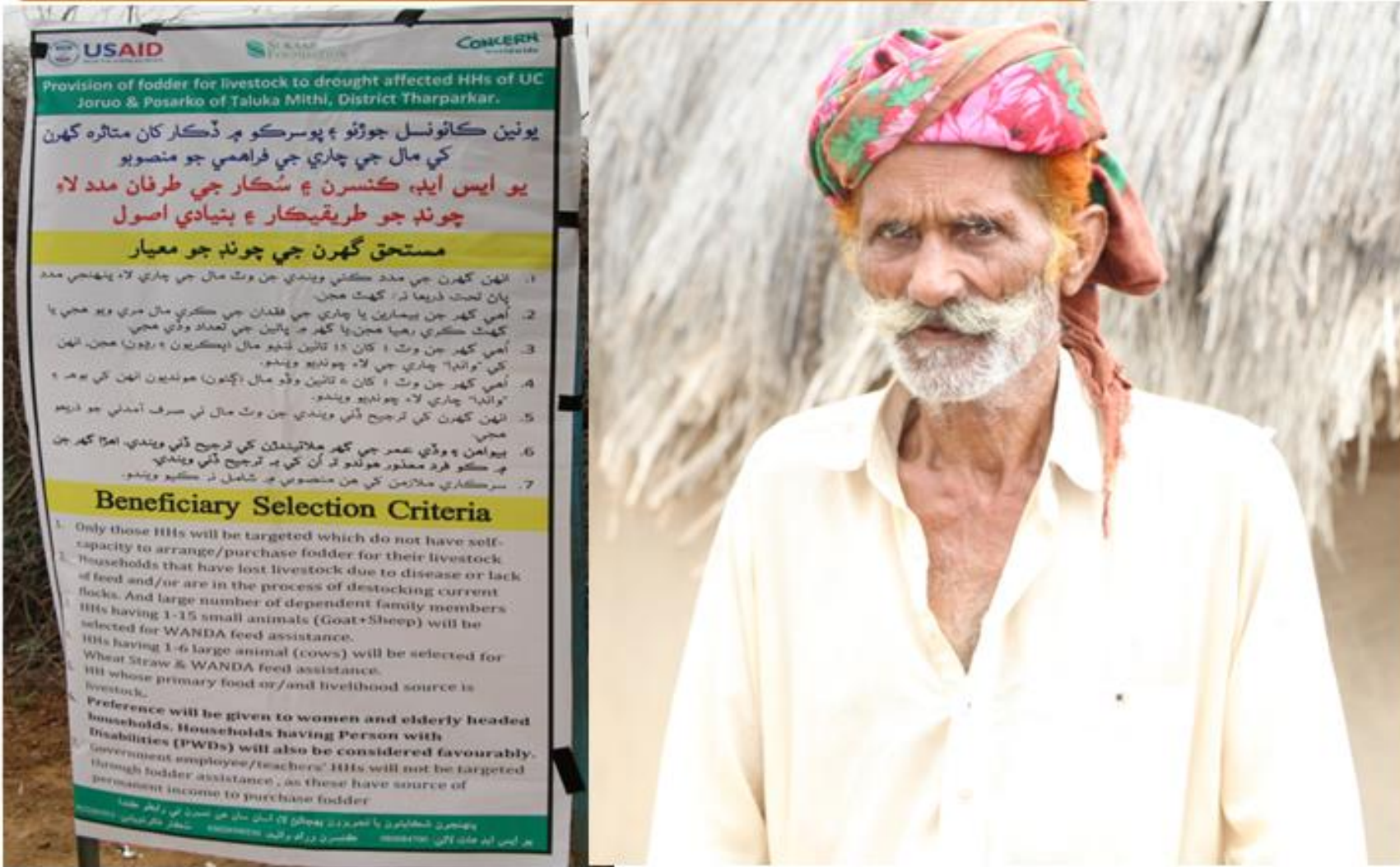
# How to include-DCP versus TOI

- Both DCP and TOI focus on environmental barriers
- Both DCP and TOI focus on local facilitators.
- Both DCP and TOI reflect locals as champions





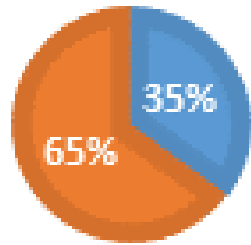
How to include (Include in beneficiary selection criteria)



# How to include (SADDD)

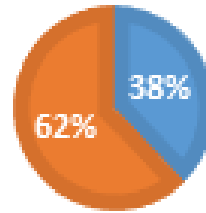
## GENDER OF BENEFICIARY

■ Male ■ Female



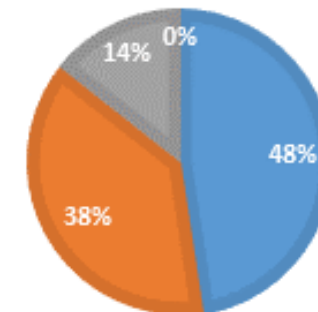
## BENEFICIARIES WITH DISABILITIES

■ Male ■ Female

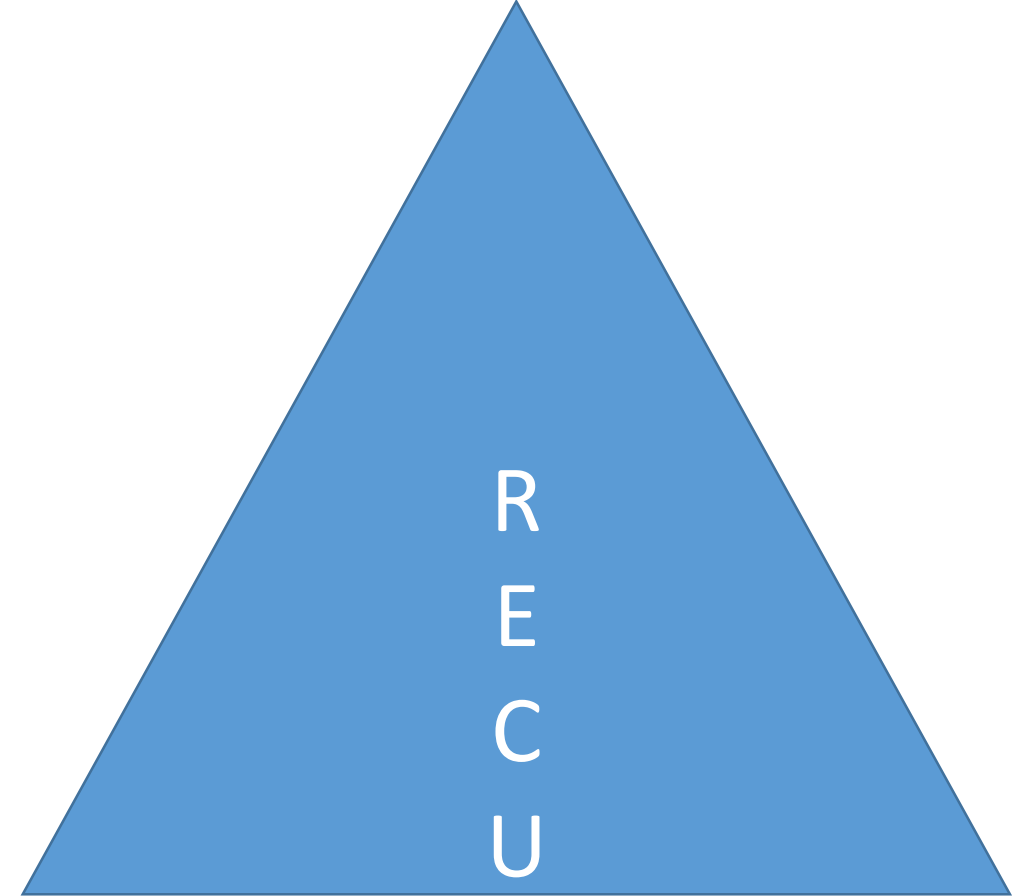


## TYPES OF DISABILITY IN FEMALES

■ Physical ■ Visual ■ Hearing ■ Mental



## How to include (Increase access)





# Thank you

For further info:

[anwar.sadat@helpagesa.org](mailto:anwar.sadat@helpagesa.org)

Mobile: +923135705407

Skype: anwar.sadat119